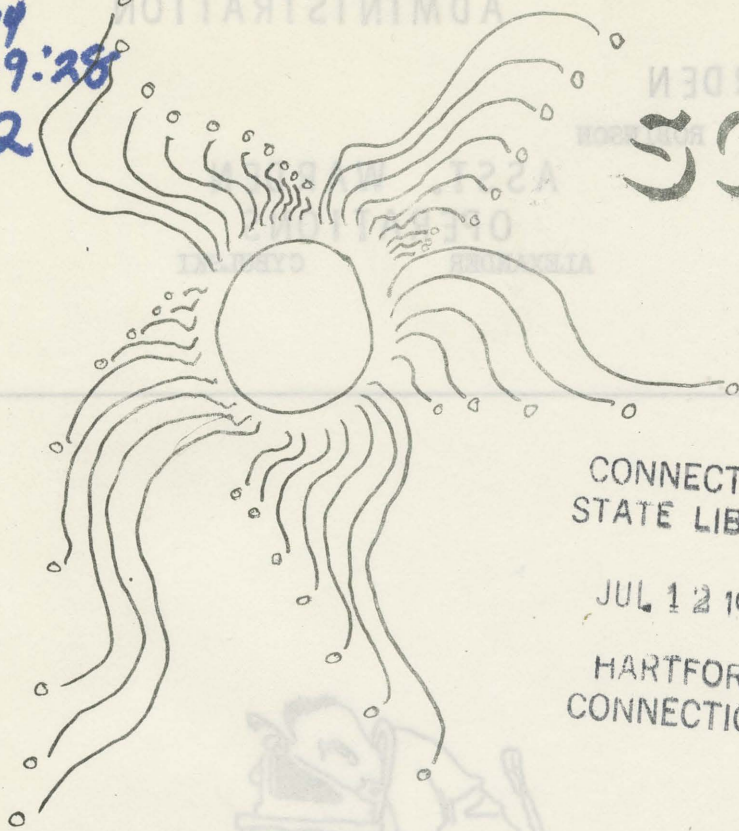


D
p93/w e
1974
V. 19:28
C.2

WEEKLY SCENE

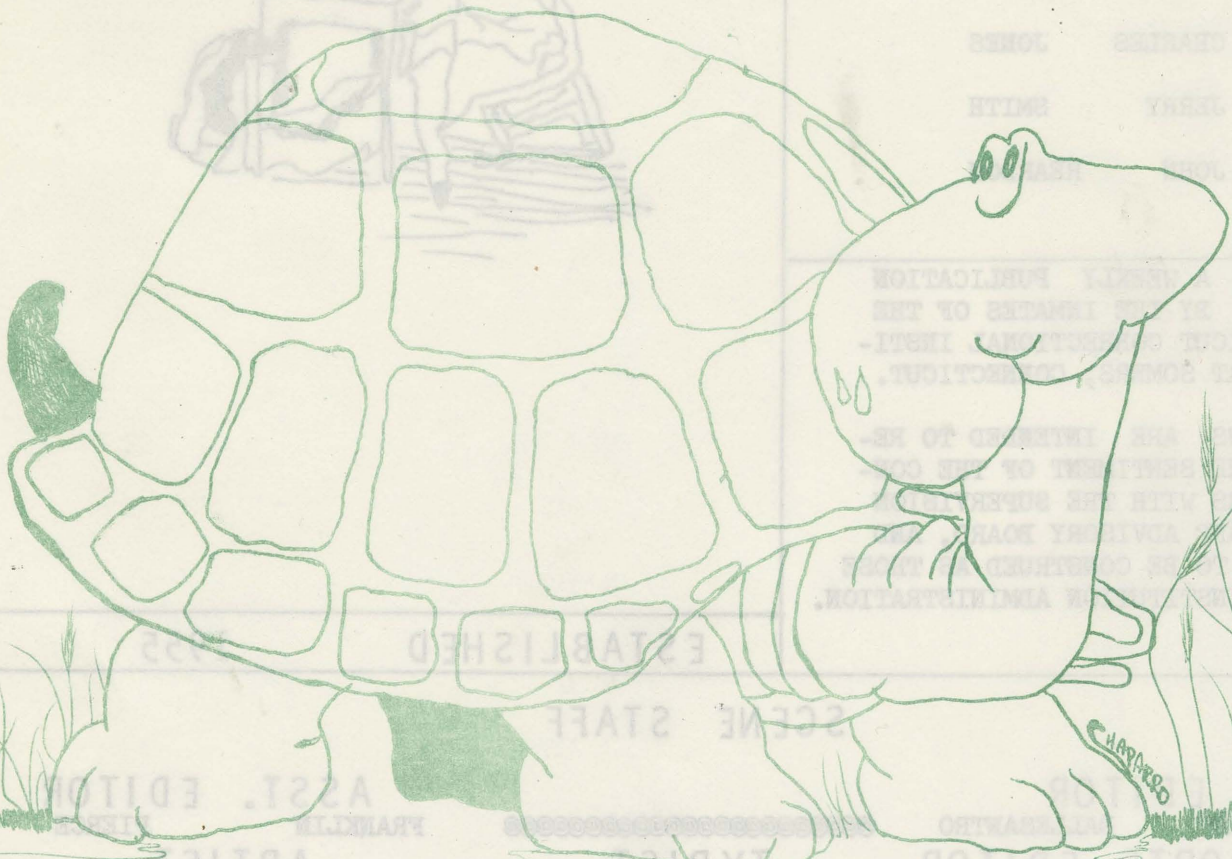
JULY 13, 1974



CONNECTICUT
STATE LIBRARY

JUL 12 1974

HARTFORD,
CONNECTICUT



INSTITUTION

ADMINISTRATION

WARDEN

CARL ROBINSON

ASST. WARDEN
TREATMENT

JAMES SINGER

ASST. WARDEN
OPERATIONS

ALEXANDER CYBULSKI

MAILING ADDRESS
WEEKLY SCENE
P.O. BOX 100
SOMERS, CT.

CIRCULATION 1,550

STAFF
ADVISORS

CHARLES JONES

JERRY SMITH

JOHN REARDON



THIS IS A WEEKLY PUBLICATION
PRINTED BY THE INMATES OF THE
CONNECTICUT CORRECTIONAL INSTI-
TUTION AT SOMERS, CONNECTICUT.

THE VIEWS ARE INTENDED TO RE-
FLECT THE SENTIMENT OF THE CON-
TRIBUTORS WITH THE SUPERVISION
OF A STAFF ADVISORY BOARD, AND
ARE NOT TO BE CONSTRUED AS THOSE
OF THE INSTITUTION ADMINISTRATION.

ESTABLISHED 1955

SCENE STAFF

EDITOR

ROBERT DALLESANTRO

SPORTS EDITOR

OFFSET PRESS

CARL WESCOTT

@@@@@@@@@@@@@@@@@@@@@@@@@@@@@@@@@@@@

TYPIST

LEE RENZULLI

CARL WESCOTT

VICTOR PAGAN

ASST. EDITOR

FRANKLIN PIERCE

ARTIST

ED CHAPARRO

PENAL PRESS

ROGER WATERS

"TAKE BACK YOUR CONVICTS"

Addressed to penitentiaries everywhere by a U. S. Businessman. (Via Penal Press)

I employ over eleven hundred men, and there is not an ex-convict among them. I do not care if a man was unjustly imprisoned and if his sponsor comes to me with proof of it. Whatever his story, I do not want him.

My "hard boiled" stand is, I hope, constructive. I am no more lacking in feelings that those who extend their sympathy which does the ex-convict no particular good. I merely look at a public problem from a different angle; I bar the ex-convict because when a penitentiary gets through with a man, innocent or guilty he is unfit to hold his place in industry with the men I've hired from the world of free workers.

I have visited penitentiaries behind the grim, grey walls. I have seen human lives timed to a brutalizing routine; I ventilated cell blocks. I have smelled the smells to which they are constantly exposed, seen the unbelievably crude sanitary systems in operation and talked with prison wardens about the ever-pressing problem of finding sufficient work to keep their charges constructively employed during the day and decently tired at night. Talk about your problems of "made" work in the world outside and its effect upon the men who do it; have you ever considered the many useless, wearying, depressing jobs by which nothing is accomplished? Jobs to which a man can bring no spark of interest? The men who face the grim problem of controlling many crowded, desperate men, cannot afford to think in terms of "redeeming human values." To avoid outbreaks they must enforce a discipline carefully pointed at bringing the human brute into subjection. Not every man who enters prison is a brute, but everyone pays the penalty of association with brutes. The big men in convict thought are the men serving the longest sentences, the men who have committed the most serious crimes. A new prisoner's philosophy, his ideas of life, and his conversation about even the most trivial affairs become colored by the viewpoint of the under-world, the world that thinks in terms of preying rather than producing.

I don't care if an ex-convict has paid his debt to society. He has spent a certain number of years in the packed, unhealthy, plotting atmosphere of the pen. I owe too much to the workmen I already have in my plant. He won't do!

He has had the initiative ground out of him. He has lost the sense of pride in productive work. His mind is teeming with ideas that he may not have accepted fully, but that he cannot purge from the brain that was forced too long to live upon them, for lack of other nourishment. He has been trained in intrigue and to conspire for even the simple things that other men take for granted; tobacco, reading matter, a few extra minutes of conversation.

The argument piles up indefinitely, a sordid array of sorry facts. I do not even bother to present them to the average ex-convict. As he stands, he does not belong in a plant like mine, but no end is served by me telling him so. I address my challenge to my state and to the nation: **KEEP YOUR CONVICTS OR MAKE CITIZENS OF THEM.**

If the end of prison is punishment and the means of punishment is calculated to rob the men of initiative, pride, decency and self-respect--then let the state find a use for the human junk that is left. Don't ask industry to do it.

No man should serve his sentence and then step out into the world. There should be a period of preparation. If society's debt must be paid to the hilt, then add a year of rehabilitation. During that year, let the convict put the dull, demoralizing routine of penitentiary life behind him. Let him become accustomed to wearing the clothes of the free world again. I would slip him away from the prison that had witnessed his shame and the comrades who had shared it. I would give him work to do that he could take pride in doing and I would give a free man's reward for that work.

I would let him become accustomed to earning money before money becomes his necessity. I would teach him to save that money and pay his bills. He would have a pay envelope every Saturday night and he would be submitted weekly bills for board, lodging and incidentals...

"If you businessmen do not provide honest work for these men, they will be driven back in spite of themselves to life of crime."

MONTVILLE PRISONERS LEARN SELF-RESPECT

Reprint from "THE HARTFORD COURANT

Submitted by: Jerome Travis

If the drug-alcoholism treatment program at Montville Correctional Center doesn't break an inmate of his habit, it at least will spoil his next high, says director of the program.

Prisoners enrolled in the Altruism House program live together family-style in special quarters on one side of the prison, meet for rapsessions about their problems and are assigned increasingly greater amounts of responsibility, said program director John Gallo.

What we are trying to do is replace the need for drugs and alcohol with something positive like self-respect, said Gallo. Eventually we hope that the residents in the program will be able to stand up and face the world on their own.

Gallo, 29, said all incoming inmates with a history of drug or drinking problems are invited to attend group discussions. Those facing long sentences or who have a history of hard-drug use are invited to live in the special quarters and are assigned a list of duties.

RESPONSIBILITY INCREASES: The longer they are in the program, the more difficult the duties become and the more responsibility the inmate must bear. Each man also is given minor privileges that can be taken away if he shirks his assignments.

Admission to the treatment program is based on a man's history and his apparent sincerity in overcoming his problem. If we don't accomplish anything else, at least we ruin it for a man the next time he gets high, said Gallo. At least then he will realize it is he who is copping out and not society.

Gallo said, we are trying to make a man feel good about himself inside. We want a man to feel good not only in his head, but also in his gut. Drugs and alcohol are just symptoms-not the real problems facing these inmates, he said.

The underlying problem--whether it is lack of self esteem or fear of failure---is the one the program tries to reach, Gallo said.

HELP ON OUTSIDE: Once an inmate in the program is released, he is referred to a halfway house or a community drug program run by the Southern Council on Alcohol and Drug Dependency.

It's important to have the help of the people on the outside. Without them and without the support of the staff here, the program could go nowhere, he said.

Richard Galligan, the liaison between the Montville program and the state Department of Correction, said Altruism House was a qualified success.

Anyone who tells you that this or any other drug program is 100 percent effective is lying, Galligan said.

To: Editor Weekly Scene
Fr: J. Travis

ARE PIPES & "REAL CIGARS SAFER?"

According to a 1973 report by the U.S. Public Health Service, "Pipe and cigar smokers in the United States as a group experience mortality rates from lung cancer and emphysema that are slightly higher than those of non-smokers. The typical cigar smoker smokes fewer than five cigars a day, and the typical pipe smoker smokes less than 20 pipefuls a day. Most pipe and cigar smokers report that they do not inhale the smoke. Those who do inhale, inhale infrequently and only slightly. As a result, the harmful effects of cigar and pipe smoking appear to be largely limited to increased death rates from cancer at those sights which are exposed to the smoke of these products."

Cigar smokers in the United States get as many mouth cancers as do the cigarette smokers (about $1\frac{1}{2}$ to 5 times as many as non-smokers). Cancer of the larynx hits cigar, pipe and cigarette smokers equally, too--- about five times as often as it strikes non-smokers. The rate is about the same for cancer of the esophagus. These relatively rare cancers account for five per cent of the U.S. cancer deaths among men. In all these cancers, the rate goes up sharply when the smoker is also a heavy drinker of alcohol (more than seven ounces per day). One possible reason: alcohol carries the noxious elements of tobacco smoke deeply into tissues. American cigar smokers die up to three times as often from lung cancer as do non-smokers; pipe smokers up to four times as often; cigarette smokers up to 23 times. Cigar and pipe smokers have at least 55 per cent greater risk of dying of emphysema than non-smokers; for cigarette smokers, the risk is five to ten times greater. And cigar and pipe smokers have $1\frac{1}{2}$ to three times more chance of dying of peptic ulcer than non-smokers. Cigarette smokers have a higher risk.

The difference is attributed to the difference in the amount smoked, and in inhaling habits. "The death rates of cigar smokers who said they inhaled at least slightly were somewhat higher than for men who never smoked regularly", reports statistician E. Cuyler Hammond of the American Cancer Society. Dr. Hammond's Cancer Prevention Study has followed more than one million Americans for six years.

The National Clearinghouse for Smoking and Health points out that all smoking is dangerous; non-inhaling is relatively less hazardous than inhaling, but not nearly so risk free as not smoking at all.

THE COFFEE BREAK AND YOUR HEALTH

Americans love coffee; they consumed 131 lbs. per person last year. But, their taste for the brew may be dangerous. A team of physicians from the Boston Collaborative Drug Surveillance Program reports in Lancet that, according to their study, people who drink more than five (5) cups of coffee a day are about twice as likely to suffer heart attacks as people who drink no coffee at all.

The researchers base their hypothesis on a study of 276 persons admitted to hospitals with acute heart attacks. When their coffee consumption was compared with that of 1104 controls, the difference was evident: the heart attack patients consumed greater quantities. The Boston group carefully avoids indicating coffee as a primary cause of the trouble but feels that further studies are needed. Perhaps people prone to heart problems would do well when coffee-break time rolls around, to at least skip a second cup.

RESIDENT INMATE STAFF

John Watts, Jr.
Resident Director

Gary Cardillo
Staff Coordinator

Raymond Wright
Senior Coordinator

EMPATHY
HOUSE

EXECUTIVE BOARD

Donald J. McConnell
Director
Addiction Services

Carl Robinson
Warden
C.C.I.-Somers

Mr. John Watts, Jr.
c/o Jeffrey Willis, Jr.
Counselor
P.O. Box 100
Somers, Connecticut 06071

Dear Friends of Empathy,

This is an open letter to all those who have given their support helping make our Anniversary-Graduation Banquet of June 21 successful.

Preparations for the Banquet required the assistance of many people throughout the institution. Everywhere we went we found people willing to help in every way they could. It is these same feelings of empathy that designate us as the thriving therapeutic community we are today. To everyone directly or remotely responsible for assisting us, we are grateful.

We would like to express a special thanks to, Mr. Don Slater, the Weekly Scene Staff, the Jaycee Photo Committee, the Members of the Band and the People in the kitchen, who added the necessary elements that made it all possible.

It seems that no matter where you go these days you find two basic types of people. Those who are very critical and quick to condemn and those who are open and tend toward humanism. We strive to become the latter in the interest of the freedom and rights of all.

Your concern has supported this concept and warrants our utmost respect.
Thank you.

In Peace,

The Empathy Family

"While We Breathe, We Hope."

EMPATHY POETRY CORNER

TO ANOTHER STAR

Internally, continuing onward in great anticipation for the long awaited arrival of space dreams long forgotten but still lingering on the silent edge of my eternity.

And space again but every once in awhile there is this cord of light shining on through the voidness, spaceness and I see you, swear I hear you speaking softly the promises of a grand tomorrow.

And I believe, fool that I am, and wait anxiously/internally for your arrival/or mine. And the stars come out as always they have, and the sun sets as always will it do and the children of what we will be play in the valley of my lost dream away from the cars and the madness that reigns supreme.

You are so fine but I am out of time with its feeling and I want to stop playing this role inside and get it out into the open air to breathe and live and lay in the sun....

For all to see....

And I guess that it is the way it is meant to in the end of the beginning of all this, internally/securing a place in some other sun.

By: R. Klahr

~~~~~  
~~~~~  
~~~~~

The following is an application for inmates who are interested in coming down to J-Basement to find out more information about Empathy House (Full Time Drug Therapeutic Community). This is not an application for an interview, but merely a request to come down to see the house for yourself and talk with some of the brothers about what is happening here. Any person sincerely interested in our Drug Program, fill out the request form and put it in the mail box in your block.

~~~~~  
~~~~~

NAME: \_\_\_\_\_

NUMBER: \_\_\_\_\_

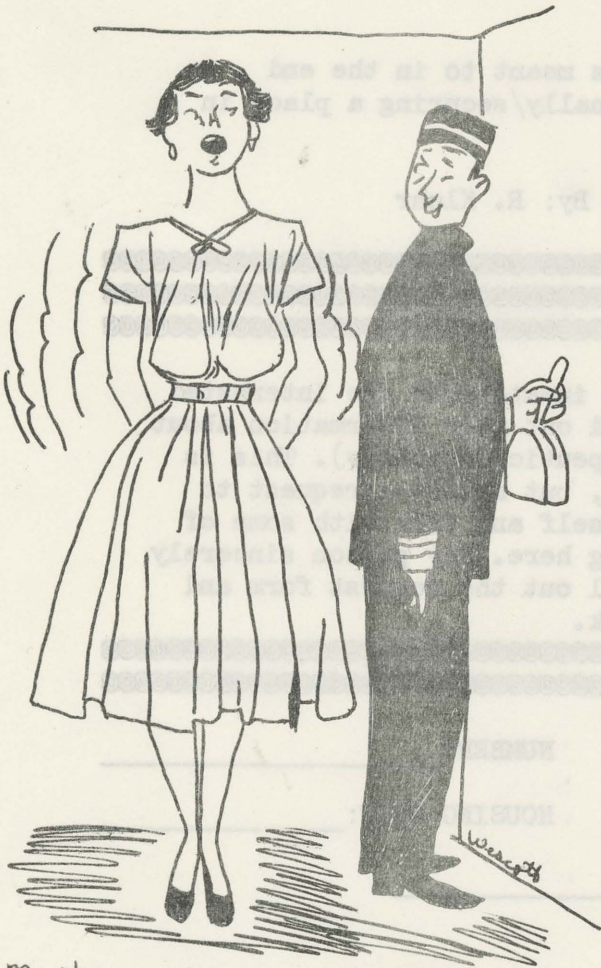
WORK AREA: \_\_\_\_\_

HOUSING UNIT: \_\_\_\_\_

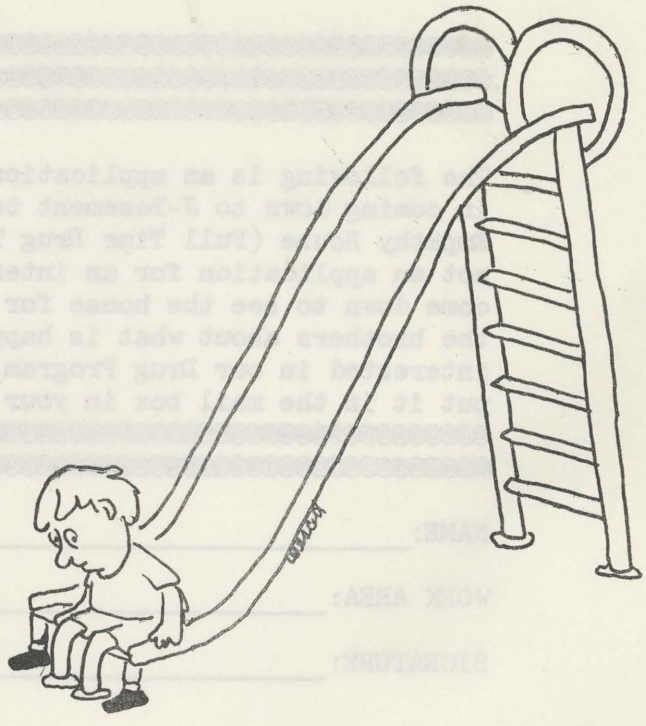
SIGNATURE: \_\_\_\_\_



The boss met our demands For bigger paychecks  
The new ones are two inches longer."



Must you stop so suddenly?





# PENAL PRESS NOTES-QUOTES

THE CANDLE, Chicago, Illinois - To the Somers population! The Correctional Programs News (THE CANDLE) is looking for inmates in various penal institutions throughout the United States, Canada and Foreign countries to contribute original articles, poems or cartoons. A check for \$25 will be forwarded to the writer if the material is accepted.

For further information please contact the Weekly Scenê staff. Thank You.

THE SPECTATOR, Jackson, Mich. - In reading the "Nightkeepers Report-1884" I would like to know if this material is authentic? If so, what is your source of information I find these historical reports interesting.

SAGE BRUSH, Carson City, Nevada - Your news publication is an excellent example of original work. The cartoon's were the most outstanding. But, I realize that is just a matter a matter of opinion.

THE PRISON MIRROR, Stillwater, Minn. - Enjoyed your cartoon, "THE PILL LINE" It made a pathetic situation a bit humorous. But it really conveyed the sad extent a person will go through to obtain a few hours of unreal bliss.

BY:  
ROGER  
WATERS

INSIDE THE WORLD  
INSIDE THE WORLD  
INSIDER  
THE HARBINGER  
THE PRESIDIO  
PONTIAC  
HAWKEYE  
THE REFLECTOR  
PENDELTON  
JEFFTOWN  
SAGEBRUSH  
THE CLOCK  
OP NEWS  
INTERPRETER  
About Face  
THE CASTLE  
the mentor  
JOURNAL  
FORUM  
THE CASTLE  
Spectator  
Eastern Echo  
THE VOICE  
THE TIME

## TELEPHONE PROJECT - HOME PHONE PROGRAM

Each man entitled to place a phone call subject to the following guidelines and conditions.

1. You will be entitled to make one (1) phone call every thirty (30) days to those people on your approved visiting list and/or members of your immediate family.
2. All calls must be made "COLLECT" and be charged to the person being called.
3. All phone calls will be limited to approximately five (5) minutes duration.
4. All calls will be made "PERSON TO PERSON" and "COLLECT".
5. If the party being called cannot be reached within one-half hour of the scheduled time, the call will be rescheduled for a later date pending an opening in the overall schedule.
6. All calls will be scheduled in the evening following the eight (8) o'clock break until approximately ten (10) o'clock. Calls will be scheduled on weekdays only, not on weekends or holidays.
7. To afford your privacy and intimacy with your family, phone calls of this program will not be monitored.
8. For those members of your immediate family who are not on your approved visiting list and you would like them to be on your approved telephone list, contact your Institutional Counselor for the proper approval form.
9. The Home Phone Program is available to men in the population subject to the following conditions:
  - A. Men will be eligible for the Home Phone Program subsequent to the initial Classification Committee action.
  - B. A poor Work Report and/or a Misconduct Report will normally disqualify a man from the Home Phone Program for a period of thirty (30) days.
  - C. Men in Administrative Segregation status will be eligible for the Home Phone Program Sixty (60) days subsequent to each individual administrative segregation recommendation. Continuation in this program by the men in administrative segregation will be contingent on each man's behavior. A Misconduct Report will naturally effect the lack of participation in this program for sixty (60) days.
  - D. If a Misconduct Report is connected to the Program, the disciplinary committee will determine a date for reapplication.

Lesser infractions not warranting a Misconduct Report, but of such a nature as to be serious within the environment of segregation will be reviewed by the Classification Committee upon the written recommendation of the segregation block officer.

If you would like to schedule a Phone call Home, please complete the proper form which you may receive from your block officer, and return it to Mr. Carl Gabbert, or deposit it in the mail box in the main corridor marked HOME PHONE PROGRAM. All requests will be scheduled on a first come first serve basis. You will be advised of the final date and time of your phone call. Please inform the party you wish to call the designated time and date as soon as you have been informed the same. A period of Seven to Ten days from your scheduling to your call will be maintained to give you an opportunity to inform your party.

## PARDON BOARD

FALL SESSION MEETS ON THE FIRST AND THIRD MONDAY IN OCTOBER AND THE FIRST MONDAY IN NOVEMBER.

APPLICATIONS: All inmates who are planning for appearance at the next sessions are encouraged to submit their requests to Mr. McCurdy, Supervisor of Records, as soon as possible.

These requests should be submitted immediately if possible and inmates are reminded that the last day for receiving requests is August 23, 1974.

APPLICATIONS RESULTING IN A STARRED (\*) CASE: Under established rules of the Pardon Board, cases cannot be heard if the petitioner has:

- (1) Appeared within a year.
- (2) Served less than a year. This one year cannot include jail time.
- (3) Appeared or was eligible for parole.

Neither this Board or the Department of Correction will assign attorneys. Each inmate must retain his own counsel.

A starred case in one of the categories is very rarely heard. By therefore waiting for a regular session, not only are inmates saved the labor of preparing required letters, but friends, lawyers, prison staff, State's Attorneys and the Board are spared the effort which should be given the regular petitioners.

It is suggested that before undertaking the task of a starred petition, an inmate should seek the advice of the prison staff which is readily given.

REMEMBER, THE LAST DAY FOR REQUESTS IS AUGUST 23, 1974, GET YOUR REQUESTS IN NOW!

## JUNTA DE PERDON

LA SECCION DE OTONIO SE REUNIRA EN EL PRIMERO Y TERSERO LUNES DE OCTUBRE Y EL PRIMER LUNES DE NOVEIMBRE.

APLICACIONES: Todo recluso que este planeando hacer aplicacioneros a la junta del Perdon para aparecer en la seccion de primavera deben someter sus peticiones (REQUEST) a Mr. McCurdy Supervisor de Record, lo mas pronto posible.

Estas peticiones deben ser sometidas inmediatamente, si es posible, y se le recuerda a todos que el ultimo dia de enviar estas peticiones es Agosto 23, 1974.

APLICACIONES RESULTANTES EN UN CASO MARCADO(\*) Bajo las reglas extablecidas de la junta del Perdon, no se oiran casos si el peticionario a:

- (1) Aparecido frente a la junta en un ano
- (2) Servido monos de un ano. Este ano no incluye tiempo de carcel.
- (3) Aparecio o fue elegido para el parole.

Un caso marcado en cual quiera de estas categorias es raramente escuchado. Por lo tanto, esperando por una seccion regular, no solo se ahorraran los reclusos la labor de preparar cartas requeridas, pero sus amigos abogados personal penal, los fiscales del estado y la junta se le ahorraran los peticionarios regulares. Se le sugiere que antes de emprender la tarea de un caso mareado, el interesado debiera de buscar el consejo de algun personal de la prision, que le sera prontamente brindado.

ACUERDESE, EL ULTIMO DIA PARA LLENAR ESTA APLICACION ES AGOSTO 23, 1974. LLENELA Y MANDELA AHORA!

JUNTA DE PERDON PARDON BOARD

OMBUDSMAN'S RECOMMENDATION ON MAIL REGULATIONS

Beginning in the last week of April, the Ombudsman initiated a major inquiry into the existing mail regulations and mail handling procedures at Somers. Following a week working in the Mail Room, the Ombudsman spent several weeks researching recent court decisions and the commentaries of modern penologists.

From these efforts the Ombudsman concluded that extensive reorganization of existing regulations and handling procedures would be in the best interests of the inmate population and the administration. The Ombudsman redrafted the regulations and submitted his proposal in the form of a recommendation on June 21, 1974.

The recommendation is presently under consideration by the administration. Because of its impact on other institutions which are not being serviced by the Ombudsman, it is expected that the Department will require additional time, within reason, beyond that specified in the Agreement which governs the Ombudsman's relationship with the Department.



WORD SEARCH.....

|                |                |
|----------------|----------------|
| Asked          | Issue          |
| Bid            | Leverage       |
| Big Board      | Long           |
| Blue Chip      | Margin         |
| Book           | MIP            |
| Call           | Mutual Fund    |
| Capital gain   | NASD           |
| Conglomerate   | No-load        |
| Covering       | Option         |
| Customer's man | Price          |
| Dow Jones      | Proxy          |
| Earnings       | Put            |
| Extra          | Quote          |
| Floor          | Rally          |
| Hedge          | Seat           |
| In-and-out     | SEC            |
| Index          | Stock exchange |
| Invest         | Stop order     |

Up tick

WALL STREET TALK

C C R E D R O P O T S C B I  
 O N A E U S S I M A R G I N  
 N A L P I M N H E D G E G A  
 G M L R I D G C L D I B B N  
 L S Y O E T S E N O J W O D  
 O R E X T R A U D E K S A O  
 M E E Y R A F L O O R D R U  
 E M S G Y L E B G L X S D T  
 R O E Q A X L S I A O A X T  
 A T C U E R E A R N I N G S  
 T S T O C K E X C H A N G E  
 E U P T I C K V B O O L K V  
 M C P E R C O V E R I N G N  
 N O I T P O D A O L O N R I

THE MOVIES FOR THIS WEEKEND ARE:



July 13th DEAF SMITH and JOHNNY EARS

Rated "PG" 94mins.

(Western) No information at this time

July 14th SOYLENT GREEN

Rated "PG" 100mins.

Stars: Charlton Heston and Liegh Taylor-Young  
 Its the year 2022, People are still the same  
 they will do anything to get what the need, and  
 they need Soylent Green.

THIS WEEK'S LOTTERY WINNERS:

|               |        |       |
|---------------|--------|-------|
| Edward French | #24855 | JBD-7 |
| Howard Lewis  | #25748 | B-33  |
| Gary Mileski  | #50050 | G-54  |
| Leon Camby    | #55719 | H-73  |

ACROSS

1. Senator known as "Mr. Republican"

5. Boring tool

8. Reduce to a pulpy state

12. Mythical monster

13. Silkworm

14. Mental product

15. Weather forecast

16. Becomes less heavy

18. Unit of energy

19. Laundry appliance

20. Former Senator \_\_\_\_\_ Long

22. High-pitched voice

26. Metric measure of capacity

28. Married

29. \_\_\_\_\_ roast

30. Place for baking

31. Pale

32. Tree Branch

33. The late \_\_\_\_\_ Heflin

34. Part of a garden

35. Theater seats

36. Follows

38. \_\_\_\_\_ of allegiance

39. Dress materials

41. Can

44. Sets in order (Dial)

47. Actor \_\_\_\_\_

48. Nautical term

49. Travel Map (abbr)

50. Biblical name

51. Stare

52. Negative Word

53. Anglo-Saxon slave

CERISE ANGER  
 OLIVER LIANA  
 AMITY MOLLUSK  
 BITE TINY CUE  
 ICE DANE SHED  
 DA WIRE COO  
 ELDER S BOOSTS  
 REE SENT HE  
 TREK STAY FRA  
 WAS GEAR POOR  
 INSULAR WARNS  
 GEESE TRANCE  
 SEDAN SENSES

@@@ ANSWER TO LAST WEEK@@@

36. Follows

38. \_\_\_\_\_ of allegiance

39. Dress materials

41. Can

44. Sets in order (Dial)

47. Actor \_\_\_\_\_

48. Nautical term

49. Travel Map (abbr)

50. Biblical name

51. Stare

52. Negative Word

53. Anglo-Saxon slave

DOWN

1. Ripped

2. Obtained from seaweeds

3. Scares

4. Knockout count

5. Make secure (Naut)

6. Rainboe

7. Make taut

8. Headdress worn by a bishop

9. Summer drink

10. Legislator (abbr)

11. Possesses

17. Collect ranch animal

19. Tiny

21. Receptacle

23. Enlivens

24. Citrus fruit

25. Lessens

26. Frequent subject of popular songs

27. Common name in Russia

28. Money (sl)

31. Movie fare

32. Building site

34. Newspaper scoop

35. \_\_\_\_\_ Vegas

37. Theater attendant

38. Start

40. Toward the center

42. Press

43. Part of the face

44. Sharp sound

45. "\_\_\_\_\_ de France"

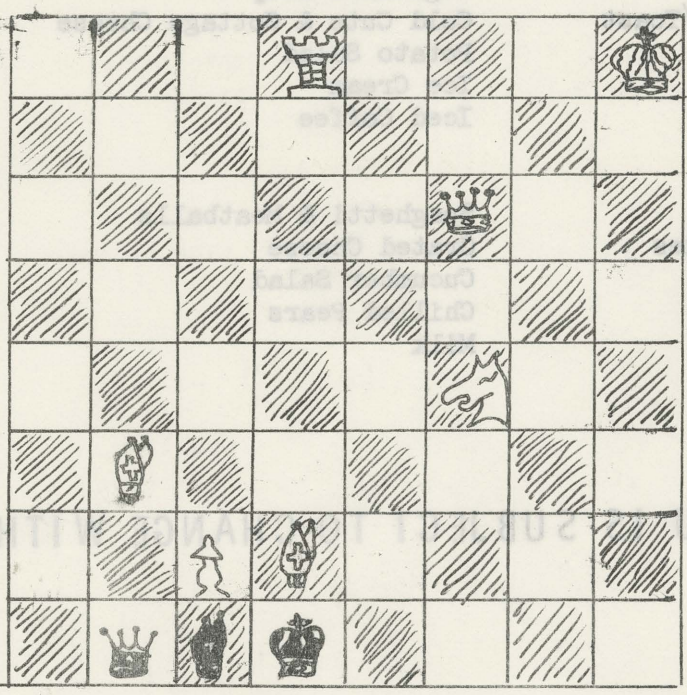
46. Exclamation

47. Zuider \_\_\_\_\_

PUZZLE PAGE PUZZLE PAGE PUZZLE PAGE

Chess Problem #43

White to play and mate in two.



All Chess Problems Submitted By; McClain

# MENU FOR THE WEEK OF JULY 14 THRU JULY 20

|                  |                                                                  |                                                                                                                 |                                                                                                           |
|------------------|------------------------------------------------------------------|-----------------------------------------------------------------------------------------------------------------|-----------------------------------------------------------------------------------------------------------|
| JULY 14<br>SUN.  | Fresh Fruit<br>Crumb Cake<br>Hot Cereal<br>Milk                  | Southern Fried Chicken<br>Whipped Potatoes<br>Buttered Sweet Peas<br>Ice Cream                                  | Chili Con Carne<br>W/Buttered Rice<br>Cornbread<br>Tossed Garden Salad<br>Chilled Peaches                 |
| JULY 15<br>MON.  | Tomato Juice<br>Scrambled Eggs<br>W/Toast<br>Cold Cereal<br>Milk | Country Link Sausage<br>Whipped Potatoes W/Gravy<br>Buttered Lima Beans<br>Applesauce<br>Cherry Pie<br>Kool-Aid | Meat Loaf W/Tomato Sauce<br>Parslied Potatoes<br>Fried Cabbage<br>Chocolate Pudding                       |
| JULY 16<br>TUES. | Grapefruit Sections<br>Hot Cereal<br>Sweet Rolls<br>Milk         | Pepper Steak<br>Oven Brown Potatoes<br>Summer Squash<br>Raspberry Jello                                         | Hot Turkey Sandwich<br>Mashed Potatoes W/Gravy<br>Mixed Vegetables<br>Pineapple Slices<br>Cranberry Sauce |
| JULY 17<br>WED.  | Pineapple Juice<br>French Toast W/Syrup<br>Cold Cereal<br>Milk   | Grilled Hamburger Steak<br>French Fried Potatoes<br>Cream Style Corn<br>Fruit Cocktail<br>Iced Tea              | Soup of the Day<br>Baked Macaroni & Cheese<br>Garden Salad<br>Frosted Cake                                |
| JULY 18<br>THUR. | Fresh Fruit<br>Crumb Cake<br>Hot Cereal<br>Milk                  | Veal Parmesan<br>Country Fried Potatoes<br>Cut Green Beans<br>Vanilla Pudding                                   | Grilled Franks<br>Oven Baked Beans<br>Cole Slaw<br>Chilled Apricots                                       |
| JULY 19<br>FRI.  | Orange Juice<br>Fried Eggs W/Toast<br>Cold Cereal<br>Milk        | Vegetable Soup<br>Cold Cuts & Cottage Cheese<br>Potato Salad<br>Ice Cream<br>Iced Coffee                        | Fish Sticks<br>W/Tartar Sauce<br>O'Brien Potatoes<br>Whole Kernel Corn<br>Jelly Roll                      |
| JULY 19<br>SAT.  | Kadota Figs<br>Donuts or Cakes<br>Hot Cereal<br>Milk             | Spaghetti & Meatballs<br>Grated Cheese<br>Cucumber Salad<br>Chilled Pears<br>Milk                               | Western Omelette<br>Cottage Fried Potatoes<br>Mixed Bean Salad<br>Strawberry Jello                        |

THIS MENU IS SUBJECT TO CHANGE WITHOUT NOTICE